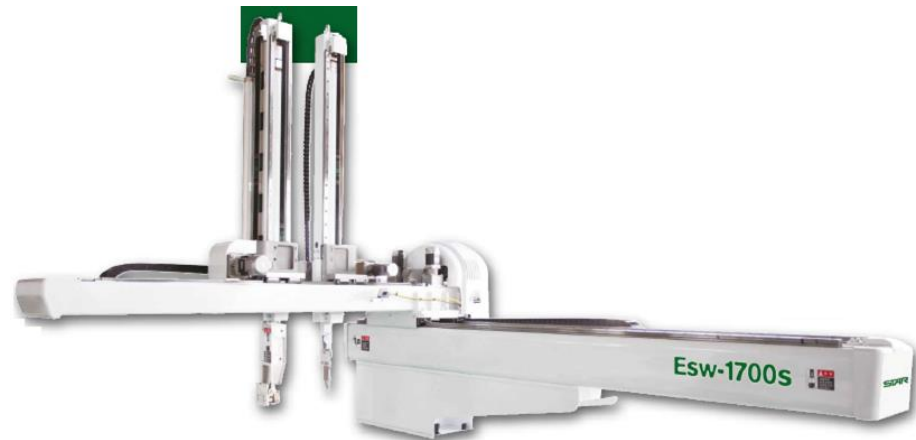


Injection Molding Machine Specifications

Sumitomo Demag 1000 – 6400 + Star ESW 1700

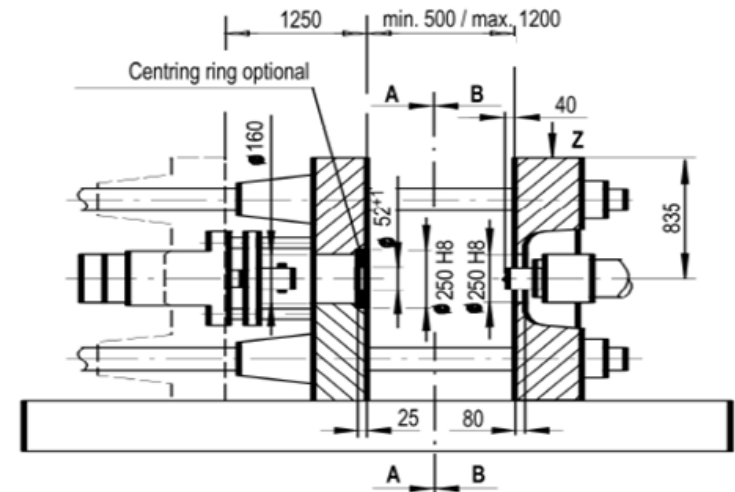
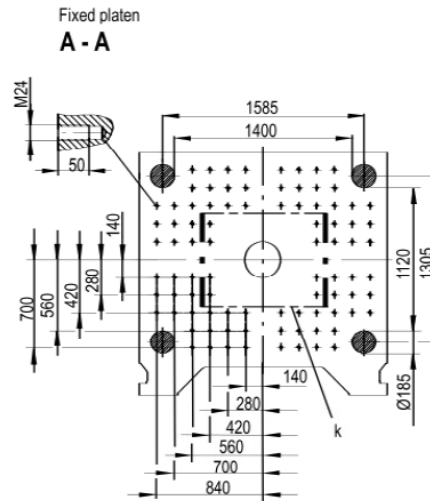
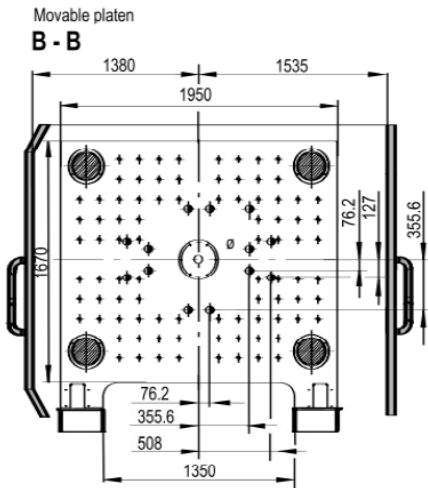


Sumitomo Demag 1000 - 6400

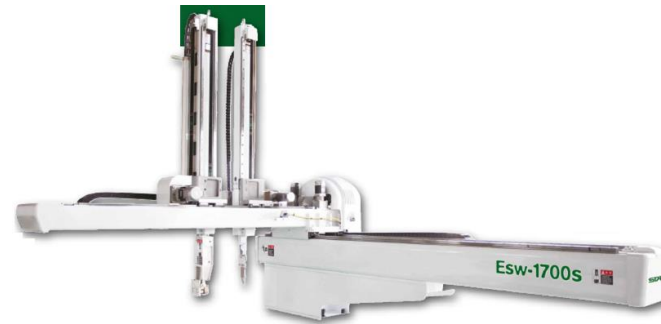
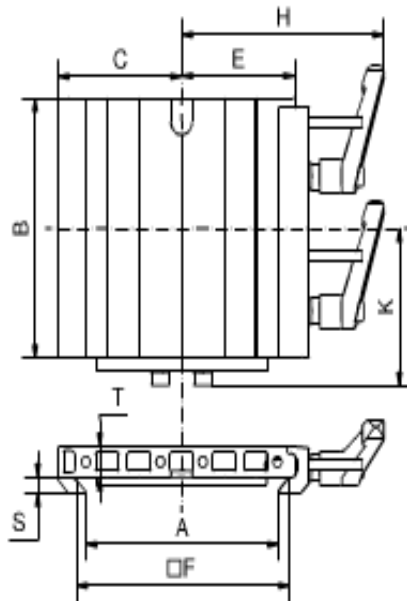
Clamping Unit		Value
Clamping Force	(KN)	10000
Size of mold Platens (h x v)	(mm)	1950 x 1670
Clearance between tie bars (h x v)	(mm)	1400 x 1120
Mold Opening Stroke	(mm)	1250
Mold height minimum	(mm)	500
Mold height maximum	(mm)	1200
Daylight	(mm)	2450
Ejector Stroke	(mm)	350

Injection and Plasticizing Unit		Value
Screw diameter	(mm)	90
L/D Ratio		20
Injection Pressure	(Bar)	1895
Stroke volume	(cm ³)	3367
Shot Weight (PS)	(g)	3064
Maximum screw stroke	(mm)	475
Injection Speed	(mm/s)	115
Screw speed	(r/min)	130

Sumitomo Demag 1000 - 6400



Sumitomo Demag 1000 - 6400



Quick Change System



Part No.	Description	A	B	C	E	F	H	K	S	T	Material	Weight [g]
		[mm]	[mm]	[mm]	[mm]	[mm]	[mm]	[mm]	[mm]	[mm]		
1-002-46-00	SWM 2 EOSK	150.5	160	90	83	160	122.6	91.6	6	14	Aluminum	911

Contactos

MORADA

Rua da Serração nº73
Guarda Nova
2430 - 154 Marinha Grande
PORTUGAL

GPS: 39°44'44.7"N 8°56'45.8"W

📞 +351 244 575 424

✉ geral@imoinject.pt