

Injection Molding Machine Specifications

Sumitomo Demag 210 – 840 + Robot Star ES 1000

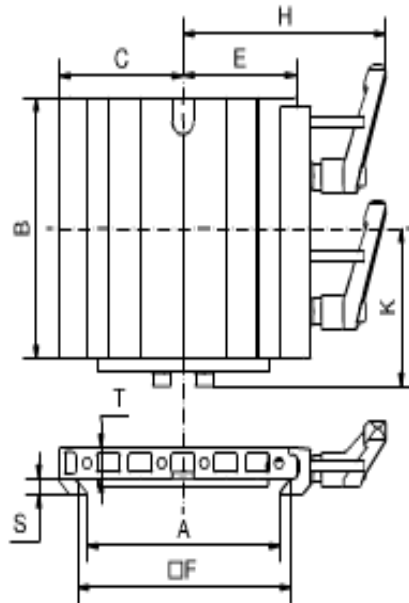


Sumitomo Demag 210 - 840

| Clamping Unit | | Value |
|--------------------------------------|--------|-----------|
| Clamping Force | (KN) | 2100 |
| Size of mold Platens (h x v) | (mm) | 860 x 860 |
| Clearance between tie bars (h x v) | (mm) | 580 x 580 |
| Mold Opening Stroke | (mm) | 575 |
| Mold height minimum | (mm) | 340 |
| Mold height maximum | (mm) | 690 |
| Daylight | (mm) | 1265 |
| Ejector Stroke | (mm) | 180 |

| Injection and Plasticizing Unit | | Value |
|---------------------------------|---------------------|-------|
| Screw diameter | (mm) | 50 |
| L/D Ratio | | 20 |
| Injection Pressure | (Bar) | 1946 |
| Stroke volume | (cm ³) | 442 |
| Shot Weight (PS) | (g) | 402 |
| Maximum screw stroke | (mm) | 225 |
| Injection Speed | (mm/s) | 233 |
| Screw speed | (r/min) | 350 |

Sumitomo Demag 210 - 840



Quick Change System



| Part No. | Description | A [mm] | B [mm] | C [mm] | E [mm] | F [mm] | H [mm] | K [mm] | S [mm] | T [mm] | Material | Weight [g] |
|-------------|-------------|-----------|-----------|-----------|-----------|-----------|-----------|-----------|-----------|-----------|----------|---------------|
| 1-002-43-00 | SWM 1 E-OSK | 90.5 | 100 | 58 | 53 | 100 | 95 | 60.6 | 6 | 12 | Aluminum | 376 |

Contactos

MORADA

Rua da Serração nº73
Guarda Nova
2430 - 154 Marinha Grande
PORTUGAL

GPS: 39°44'44.7"N 8°56'45.8"W

📞 +351 244 575 424

✉ geral@imoinject.pt