

Injection Molding Machine Specifications

Sumitomo Demag 350 - 1450 + Robot Star ES 1000



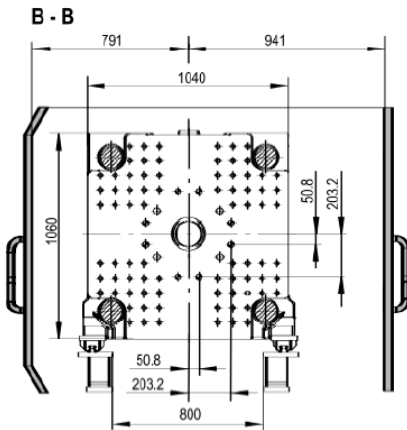
Sumitomo Demag 350 - 1450

Clamping Unit		Value
Clamping Force	(KN)	3500
Size of mold Platens (h x v)	(mm)	1040 x 1060
Clearance between tie bars (h x v)	(mm)	720 x 720
Mold Opening Stroke	(mm)	730
Mold height minimum	(mm)	350
Mold height maximum	(mm)	745
Daylight	(mm)	1475
Ejector Stroke	(mm)	200

Injection and Plasticizing Unit		Value
Screw diameter	(mm)	60
L/D Ratio		20
Injection Pressure	(Bar)	19,5
Stroke volume	(cm ³)	763
Shot Weight (PS)	(g)	695
Maximum screw stroke	(mm)	378
Injection Speed	(mm/s)	230
Screw speed	(r/min)	310

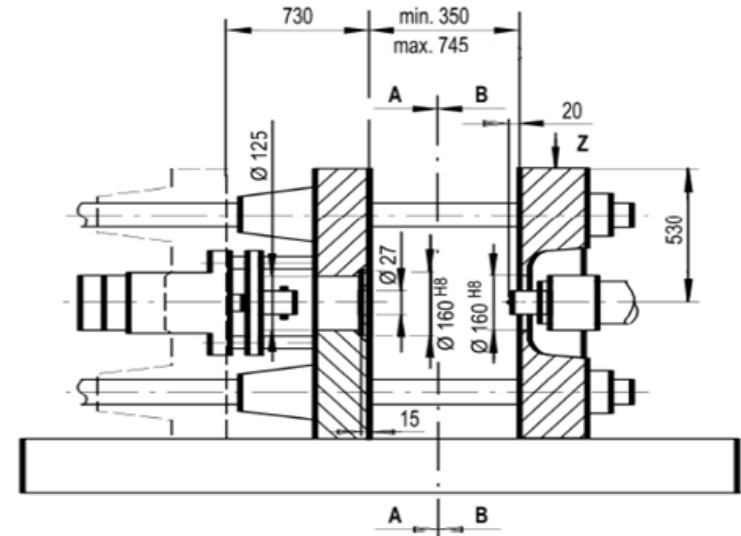
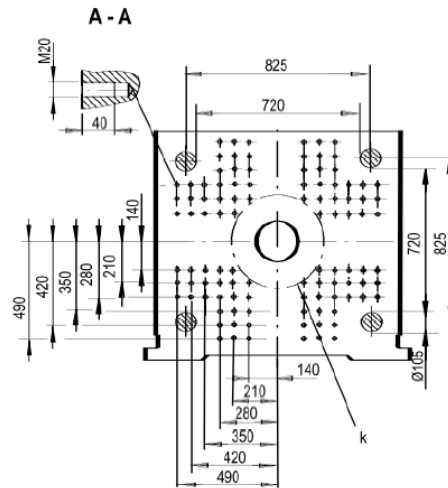
Sumitomo Demag 350 - 1450

Movable platen

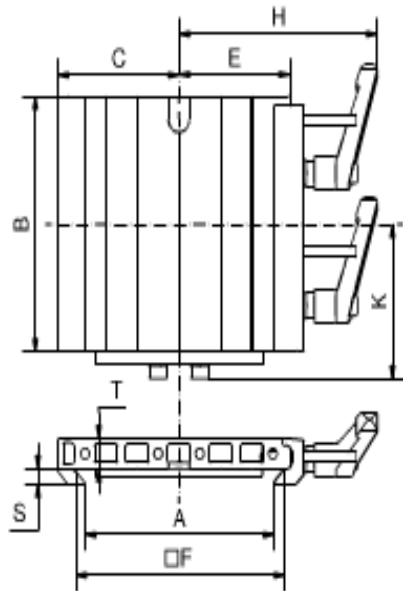


Hole pattern a
 ◊ bore diameter

Fixed platen



Sumitomo Demag 350 - 1450



Quick Change System



Part No.	Description	A [mm]	B [mm]	C [mm]	E [mm]	F [mm]	H [mm]	K [mm]	S [mm]	T [mm]	Material	Weight [g]
1-002-43-00	SWM 1 E-OSK	90.5	100	58	53	100	95	60.6	6	12	Aluminum	376

Contactos

MORADA

Rua da Serração nº73
Guarda Nova
2430 - 154 Marinha Grande
PORTUGAL

GPS: 39°44'44.7"N 8°56'45.8"W

📞 +351 244 575 424

✉ geral@imoinject.pt