

Injection Molding Machine Specifications

Sumitomo Demag 650 – 3300 + Robot Star ES 1400

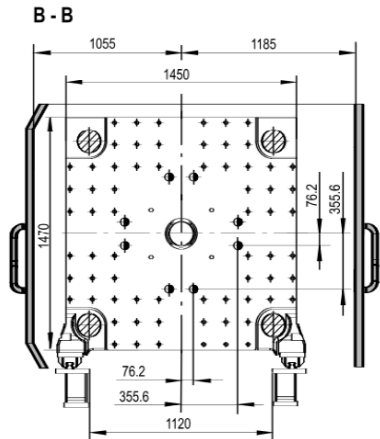


Sumitomo Demag 650 - 3300

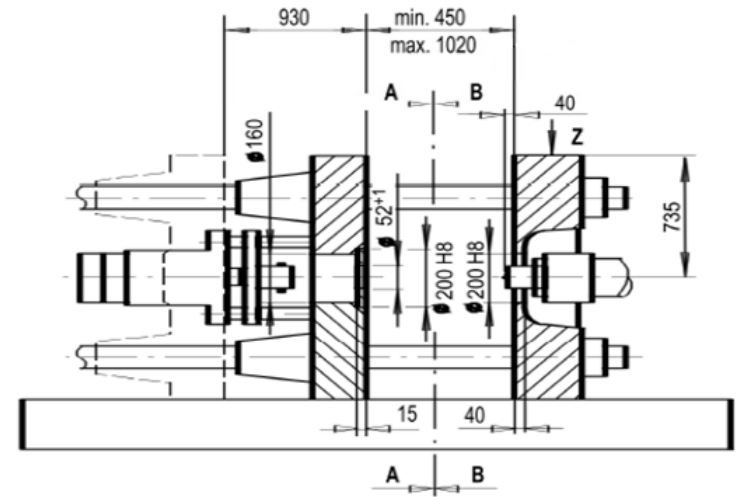
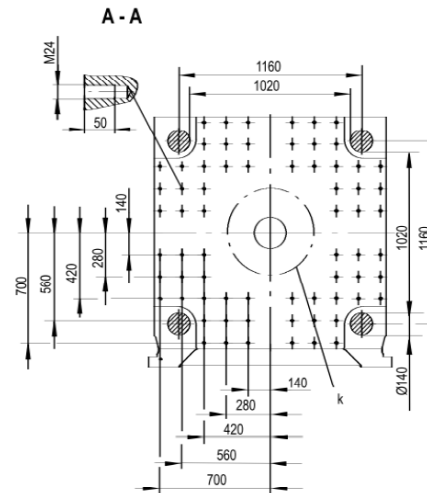
Clamping Unit		Value
Clamping Force	(KN)	6500
Size of mold Platens (h x v)	(mm)	1450 x 1470
Clearance between tie bars (h x v)	(mm)	1020 x 1020
Mold Opening Stroke	(mm)	930
Mold height minimum	(mm)	450
Mold height maximum	(mm)	1020
Daylight	(mm)	1950
Ejector Stroke	(mm)	300

Injection and Plasticizing Unit		Value
Screw diameter	(mm)	80
L/D Ratio		20
Injection Pressure	(Bar)	1855
Stroke volume	(cm ³)	1779
Shot Weight (PS)	(g)	1619
Maximum screw stroke	(mm)	354
Injection Speed	(mm/s)	130
Screw speed	(r/min)	210

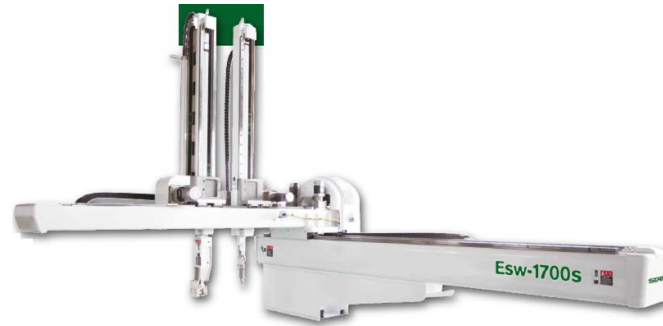
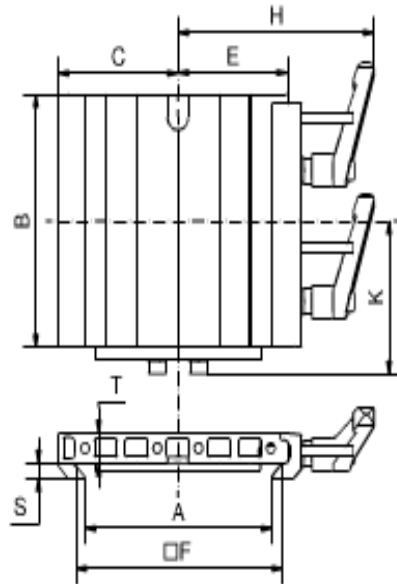
Sumitomo Demag 650 - 3300



Hole pat
bore dia



Sumitomo Demag 650 - 3300



Quick Change System

Part No.	Description	A [mm]	B [mm]	C [mm]	E [mm]	F [mm]	H [mm]	K [mm]	S [mm]	T [mm]	Material	Weight [g]
1-002-46-00	SWM 2 E-OSK	150.5	160	90	83	160	122.6	91.6	6	14	Aluminum	911

Contactos

MORADA

Rua da Serração nº73
Guarda Nova
2430 - 154 Marinha Grande
PORTUGAL

GPS: 39°44'44.7"N 8°56'45.8"W

📞 +351 244 575 424

✉ geral@imoinject.pt